

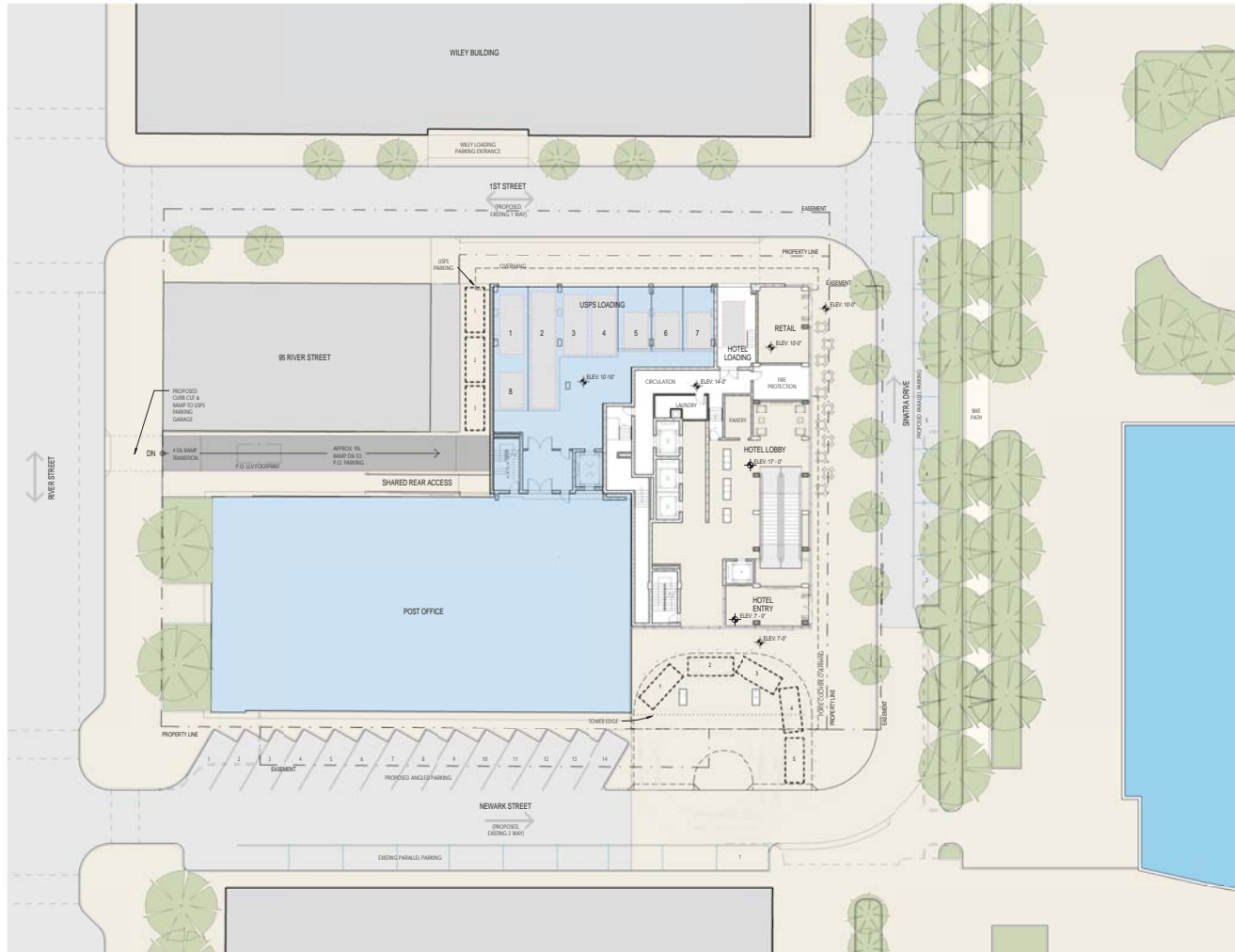


SCOPE DOCUMENTS

The Construction Documents have not been copyrighted. This drawing may be reproduced or not controlled. The documents issued indicate the general scope of the Project. The Contractor is responsible for complete and accurate pricing and work, and shall include all items necessary for the proper execution and completion of the Project and include in or out of contract of the Project and comply with any and all requirements of national, state, and local codes. The Contractor shall obtain the Order and technical of any materials, manufacturers or services the information provided. It is noted in green and any omissions, inaccuracies or errors are approved by the Architect in whole or in part outside the scope and shall be binding on the Contractor, when consistent with the general scope and quality of the Project.

ISSUANCES

No.	Drawing Issue-Description	Date



1 SITE PLAN
A1.01 SCALE: 1/8" = 1'-0"

RIVERFRONT HOTEL AND
POST OFFICE RENOVATION
SCHEME 25

Hoboken, New Jersey

KMS Development

SITE PLAN

JBW	20120240.01
Project Manager	Project No.
JA	20160317
Project Manager	Date
JA	
Project Manager	
WG	
Self-Inspected	
	A1.01

PROJECT NUMBER: 20120240 RIVERFRONT HOTEL AND POST OFFICE RENOVATION SCHEME 25
SHEET NUMBER: A1.01 SITE PLAN
DRAWING NUMBER: 20160317.dwg
DATE: 03/17/2016
DRAWN BY: WG